

LAKEFIELD OF THE LANDINGS AT WELLINGTON P.U.D. - PLAT 2A

IN PART OF SECTION 7 AND 18, TOWNSHIP 44 SOUTH, RANGE 41 EAST

PALM BEACH COUNTY, FLORIDA

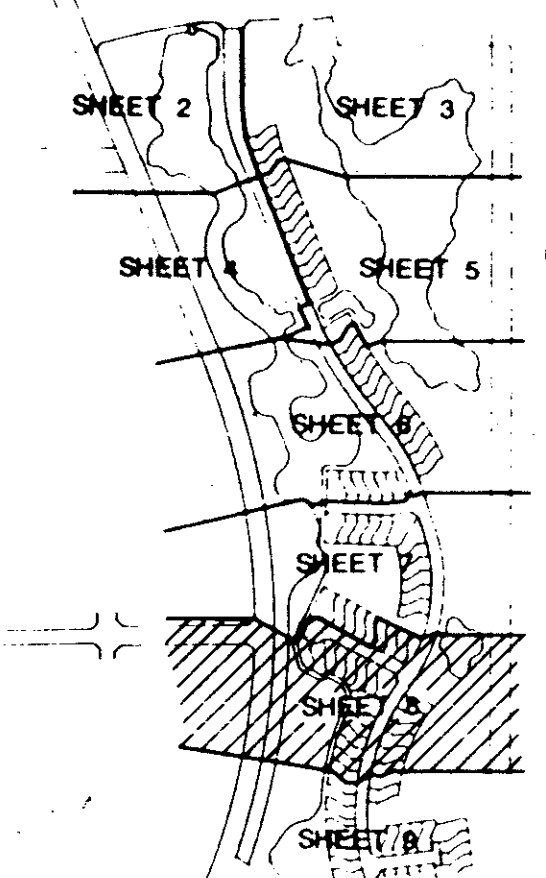
IN NINE SHEETS SHEET NO. 8

GEE & JENSON
ENGINEERS - ARCHITECTS - PLANNERS, INC.
WEST PALM BEACH, FLORIDA
AUGUST 1989



0269-008

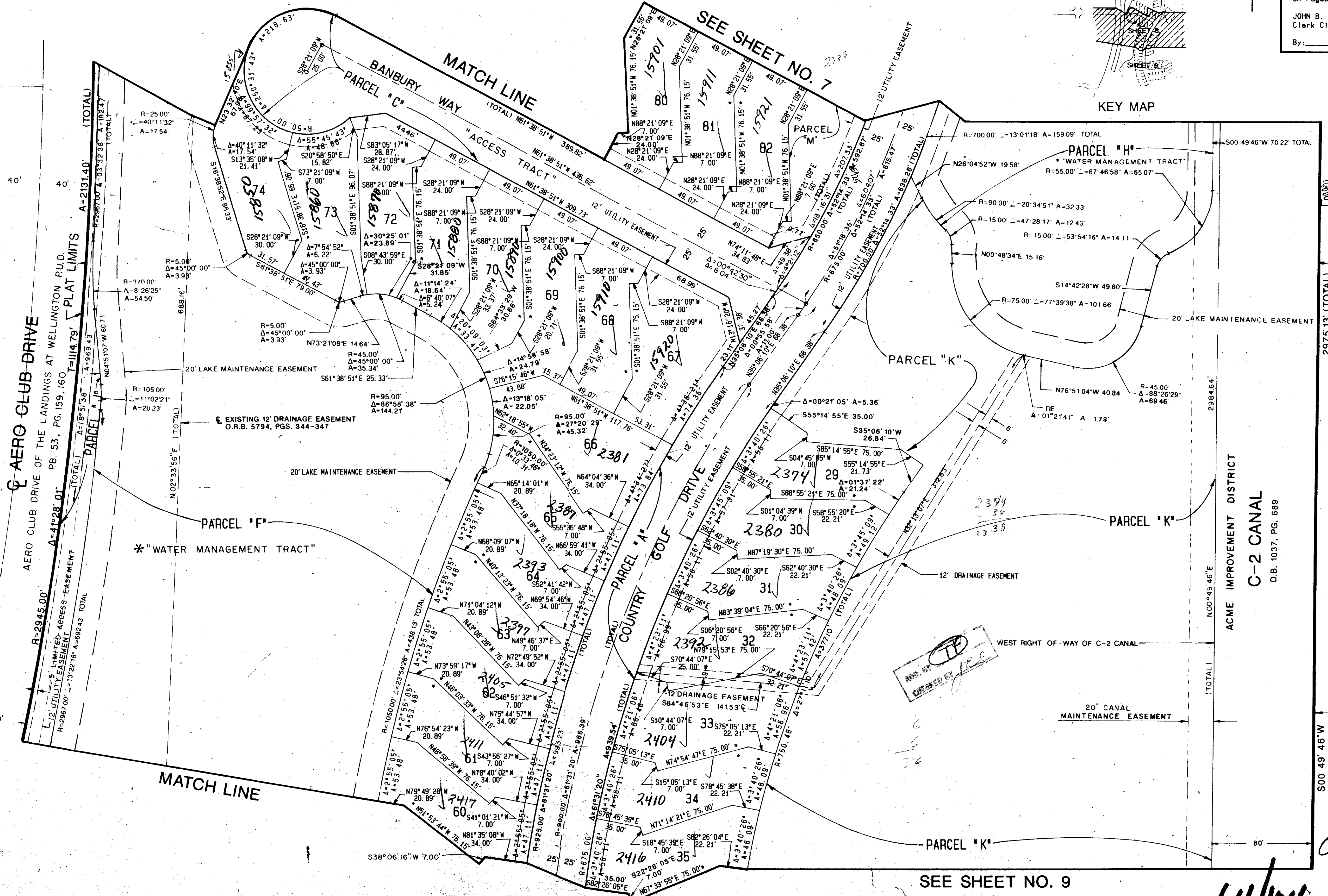
104



STATE OF FLORIDA
COUNTY OF PALM BEACH
This plat was filed for
record at _____ M. this _____ day
of _____ 1989, and duly
recorded in Plat Book No. _____
on Pages _____ thru _____.

JOHN B. DUNKLE
Clerk Circuit Court
By: _____ D.C.

WELLINGTON AERO CLUB OF THE LANDINGS
AT WELLINGTON P.U.D.
P.B. 38, PGS. 159-164



Subdivision of the Landings at Wellington
SHEEDIVISION # 104
BOOK 64 PAGE 104
FLOOR MAP # 100B
CLUB # 77 ZONING RE
78-287 REC CODE 33414
FOR NAME PLAT
PLA. 2A

TAZ 728

SADDLE TRAIL PARK OF WELLINGTON P.U.D.
P.B. 41, PG. 103-105

ACME IMPROVEMENT DISTRICT
C-2 CANAL
D.B. 1037, PG. 689

EAST LINE OF SECTION 18

0269-008

NOTE: ALL LINES ARE RADIAL UNLESS OTHERWISE NOTED!

LAKEFIELD OF THE LANDINGS AT WELLINGTON P.U.D. - PLAT 2A
* WATER MANAGEMENT TRACTS ARE THE PERPETUAL MAINTENANCE

64/104

RET. 78-287

NOTED DW/CAD
WJN DW/CAD
CKED W.J.V.
OVED J.H.D.